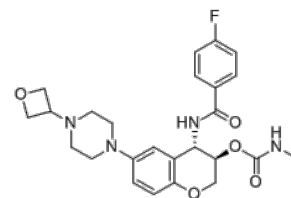


Product Name : LY-3000328
Cat. No. : PC-62811
CAS No. : 1373215-15-6
Molecular Formula : C₂₅H₂₉FN₄O₅
Molecular Weight : 484.528
Target : Cathepsin
Solubility : 10 mM in DMSO



Biological Activity

LY-3000328 is a potent, highly selective **cathepsin S** inhibitor with IC₅₀ of 7.7 nM.
LY-3000328 displays >500-fold selectivity over cathepsin L, cathepsin K, cathepsin B, and cathepsin V.
LY-3000328 shows efficacy in a CaCl₂-induced AAA (Abdominal Aortic Aneurysm) in vivo model.

References

- Jadhav PK, et al. *ACS Med Chem Lett.* 2014 Aug 27;5(10):1138-42.
Payne CD, et al. *Br J Clin Pharmacol.* 2014 Dec;78(6):1334-42.
Steimle A, et al. *J Autoimmun.* 2016 Dec;75:82-95.

Caution: Product has not been fully validated for medical applications. Lab Use Only!

E-mail: tech@probechem.com